

WORD Magic Trick

Number	Text
76520	BP GDM
77130	BP GDM
77517	BP GDM
77526	BP GDM
77612	BP GDM
77970	337696 363 BP GDM
77972	BP GDM
78006	BP GDM
78171	337694 MAG DATA
78172	337687 MAG DATA
78333	319011
78348	319535
78942	319535
79155	319535
79199	BP GDM
79290	BP GDM
79328	359837 BP GDM
79365	NON PLVIC BP R&D
79604	BP GDM
79622	BP GDM
79642	EL 374386 BP GDM
79700	EL 375817 BP GDM
79710	BP GDM
79757	BP GDM
79824	BP GDM
79825	BP GDM



Do you often have to repeatedly type the same words over and over in Word, say

United Kingdom of Great Britain and Northern Ireland?

Active Contract	Contract Number	Contract Value	Contract Type
BP GDM INFO VLR COLLECTION AGREE	16520	53.7%	
BP GDM WASHINGTON DC - QUALITY	17130	43.5%	
BP TRM/NAO GDM REVENUE SUPPORT	17517	31.2%	
BP GDM GLOBAL REVENUE	17526	15.7%	
BP GDM INFO GDM PROJECT - ENR	17612	15.7%	
337896_353 BP GDM AMERICA REVENUE GDM AGREE	17970	14.9%	
BP GDM INFO GDM PROJECT - ENR	17972	13.9%	
BP GDM INFO GDM PROJECT - ENR	18008	13.9%	
NAG GDM	18171	13.9%	
NAG GDM	18172	13.9%	
GEOGRAPHIC	18333	11.9%	
DAT DRUG	18348	11.9%	
BP GDM INFO GDM PROJECT - ENR	18942	11.9%	
NA GAS DATA PROGRAM DATA AGREE	19155	11.9%	
BP GDM NA GAS RESEARCH MIGRATION E	19289	11.9%	
BP GDM NA GAS REVENUE UPDATE	19290	11.9%	
BP GDM INFO GDM PROJECT - ENR	19328	11.9%	
NON-ELAND BP REVENUE	19365	11.9%	
BP GDM	19604	11.9%	
BP GDM	19622	11.9%	
BP GDM	19542	11.9%	
BP GDM	19708	11.9%	
BP GDM	19709	11.9%	
BP GDM TRM/NAO GDM REVENUE SUPPORT	19727	11.9%	
BP GDM NA GAS REVENUE UPDATE	19757	11.9%	
BP GDM-NAO DR SUPPORT OF RESEARCH	19824	11.9%	
BP NA GAS RECALL SWEEP AND DATA I	19825	11.9%	

A pair of GOP governors on Friday moved to impose new mitigation measures in their states amid record numbers of new coronavirus infections, with both Texas Gov. Greg Abbott and Florida Gov. Ron

Combining Power BI statistics yields some very powerful results. In this part we'll show how this Linear Regression is a very useful statistical tool that helps us understand the relationship between variables and the effects they have on each other. It can be used across many industries in a variety of ways - from spurring value-gaining customer insight - to benefiting businesses that have in

The Coefficient of Correlation is a statistic we use to determine if there is a relationship between two variables. The output of this statistic equals somewhere between 1 and -1. The closer to 1 the number is, the more positively related the variables are. As in, if X increases, Y increases. The closer to -1 the number is, the more negatively related the variables are. If X increases, Y decreases.

So how do we perform Linear Regression in Power BI? First, we make a scatter plot and visually examine the data to see if we think there is a relationship. Scatter Plot in Power BI

In this example, I used my own financial data to see if I could understand the best ways to save money each month. This analysis shows the relationship between the number of times I went to restaurants and the money spent in this category of my monthly budget.

Food is my second highest budget category each month. I don't think the bank will cut my mortgage down to save me a bit each month, so my restaurant spending seems like the next best place to start. Here's how to follow along using your own data.

A pair of GOP governors on Friday moved to impose new mitigation measures in their states amid record numbers of new coronavirus infections, with both Texas Gov. Greg Abbott and Florida Gov. Ron

Combining [Power BI](#) with statistics yields some very powerful results. In this post we'll show how easy it is to do Linear Regression with the Power BI tool.

Linear Regression is a very useful statistical tool that helps us understand the relationship between variables and the effects they have on each other. It can be used across many industries in a variety of ways - from spurring value to gaining customer insight - to benefit businesses that have in

that predicts the *dependent* variable values as a function of the *independent* variables. The output of this statistic equals somewhere between 0 and 1. The closer to 1 the number is, the more positively related the variables are. As in, if X increases, Y increases. The closer to -1 the number

The [Coefficient of Determination](#) is a related statistic that then tells us how well our model fits the data. This statistic is always between 0 and 1, and the closer to 1 the value is, the better our model fits the data set.

the data to see if we think there is a relationship.

Scatter Plot in Power BI

In this example, I used my own financial data to see if I could understand the best ways to save money each month. This analysis shows the relationship between the number of times I went to restaurants and the money spent in this category of my monthly budget.

Food is my second highest budget category each month. I don't think the bank will cut my mortgage down to save me a bit each month, so my restaurant spending seems like the next best place to start. Here's how to follow along using your own data.

for his resort in New Jersey for the weekend, the president abruptly

Admittedly, we don't have to type out such long strings of words in our everyday work communications, but there are times when we do get tired of repeatedly typing certain words over and over again in our communications.

Fortunately, there is a time saving trick in Word.

The screenshot shows a Power BI dashboard with a table of project data and a scatter plot. The table has columns for 'Project - EURO' and 'Project Name'. The scatter plot shows a positive correlation between two variables.

Project - EURO	Project Name
16520	BP GDM URS VLR CONNECTION
17130	BP GDM WAHNSLITZ DATA COLLECT
17517	BP TRINIDAD DOCUMENTATION
17526	BP GDM CALGARY PROJECT
17612	BP GDM SDE 92 DATA
17970	337896_353 BP GDM ARKOMA BORRERO
17972	BP GDM LX ORACLE
18008	BP GDM CANADA PETROBRAS
18171	337884 BP GDM NA GAS DATA PROGRAM
18172	337887 BP GDM NA GAS DATA PROGRAM
18333	319681 GEOGRAPHIC PROJECT DATA LOAD
18348	319535 DAT DIRECTORY CLEANUP AND CON
18942	BP GDM LX ORACLE
19155	347474 NA GAS DATA PROGRAM
19289	353872 BP GDM NA GAS ESPERANZA
19290	BP GDM NA GAS FINRO
19328	350837 BP GDM BHM EXECUTE PLOT FOR
19365	NON-ELAND BP R5000 SELECT
19604	BP GDM NA GAS BY
19622	BP GDM TRINIDAD BHM PROJECT
19642	EL 374380 BP GDM HSE SEMI DATA
19708	EL 375807 BP GDM NAG GAS ASSIGNMENT
19709	BP GDM TRINIDAD BHM PROJECT
19727	EL 375807 BP GDM BHM GLOBAL CONSULTING
19757	EL 382102 BP GDM NA GAS FENDER UPDATE
19824	EL 381703 BP GDM NA GAS DR SUPPORT OF
19825	EL 383912 BP NA GAS RECALL SWEEP AND



We'll use the longest

village name

in the world as an example.



Llanfairpwllgwyn-

gwynyllgogerychwyrn-

drobwl llantysiliogogo-

goch A village in Wales.



Imagine, typing this over and over.



Combining [Power BI](#) with statistics yields some very powerful results. In this post we'll show how easy it is to do Linear Regression with the Power BI tool.

The Simple Linear Regression model allows us to summarize and examine relationships between two variables. It uses a single *independent* variable and a single *dependent* variable and finds a linear function that predicts the *dependent* variable values as a function of the *independent* variables.

The [Coefficient of Correlation](#) is a statistic we use to determine if there is a relationship between two variables. The output of this statistic equals somewhere between 1 and -1. The closer to 1 the number is, the more positively related the variables are. As in, if X increases, Y increases. The closer to -1 the number is, the more negatively related the variables are. As in, if X increases, Y decreases. The closer to 0 the number is, the more unrelated the variables are. The [Coefficient of Determination](#) is related to the [Coefficient of Correlation](#). This statistic always between 0 and 1, and the closer to 1 the value is, the better our model is to the data set.

So how do we perform Linear Regression in Power BI? First, we make a scatter plot and visually examine the data to see if we think there is a relationship.

Hopefully I spelled this right!

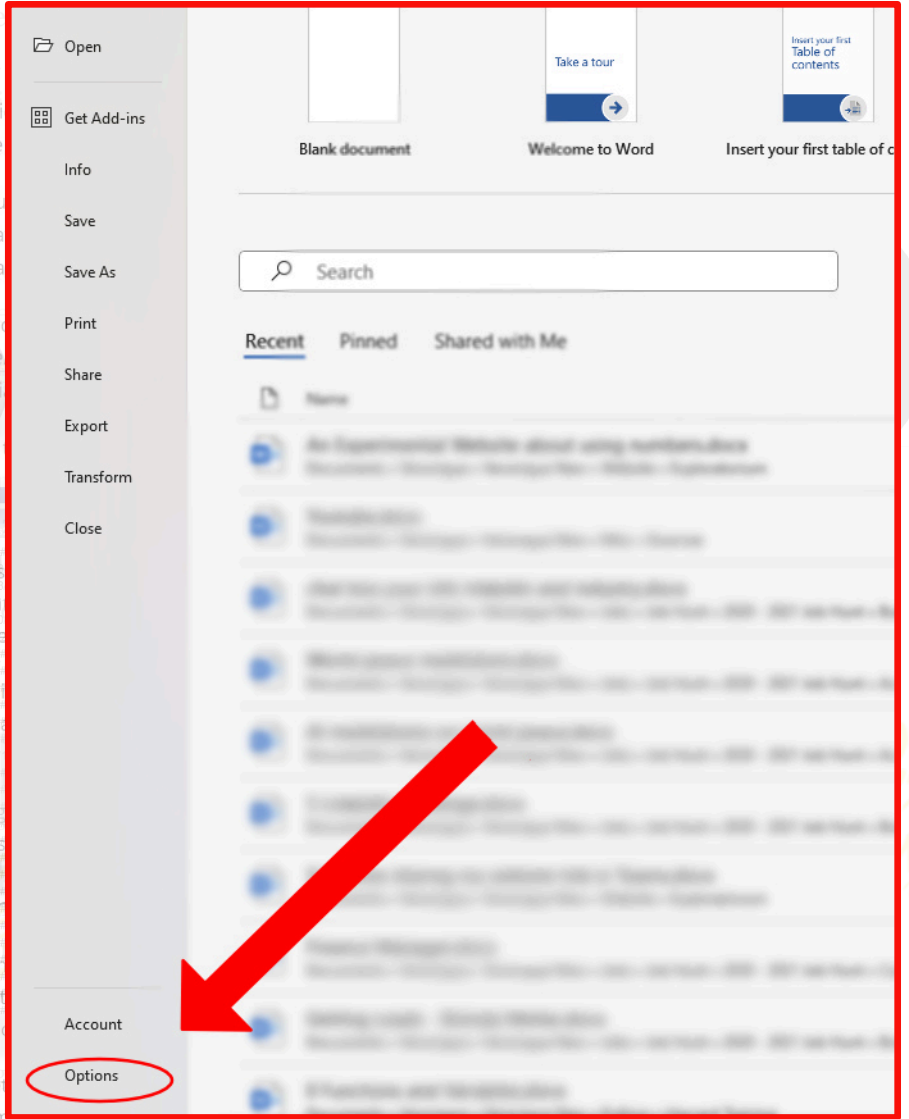
Scatter Plot in Power BI

In my monthly budget, I have a category for restaurant spending each month. This analysis shows the relationship between the number of restaurants I go to each month and the money spent in this category of my monthly budget.

Here's the trick...

In Word, do

File and then on bottom left Options.



A pair of GOP governors on Friday moved to impose new mitigation measures in their states amid record numbers of new coronavirus infections, with both Texas Gov. Greg Abbott and Florida Gov. Ron

Combining Power BI with statistics yields some very powerful results. In this post we'll show how easy it is to do Linear R

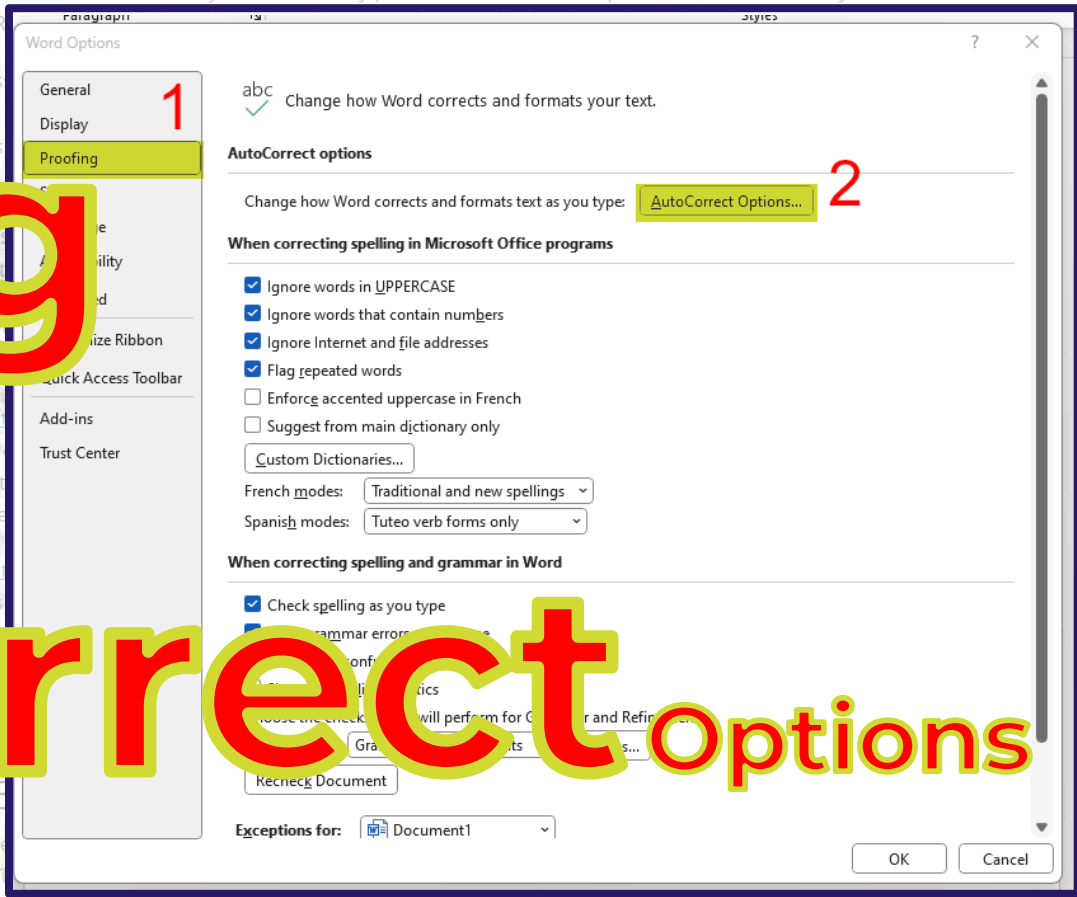
Next, pick

1 Proofing

and then

2 AutoCorrect Options

Project	ETJPO	Project Name	CONTRACTUAL STATUS	ACT FINANCIAL HEALTH
6520		BP GDM UPDS VLB COMPLETION AND C		53.9%
7130		BP GDM WANSUTER DATA QUALITY		31.9%
7517		BP GDM GDM GDM GDM GDM GDM GDM		49.5%
7526		BP GDM GDM GDM GDM GDM GDM GDM		51.2%
7612		BP GDM GDM GDM GDM GDM GDM GDM		55.2%
77970	337696	BP GDM GDM GDM GDM GDM GDM GDM		40.5%
77972		BP GDM LX ORACLE SERVER		57.3%
8008		BP GDM CANADA PETROTECHNICAL DM		48.6%
8171	337694	NAG GDM CANADA PETROTECHNICAL DM		55.4%
8172	337687	BP GDM GDM GDM GDM GDM GDM GDM		52.9%
8333	319681	BP GDM NA GAS DATA PLOT FOR GDM		49.0%
8348	319535	BP GDM NA GAS DATA PLOT FOR GDM		49.0%
8942		BP GDM NA GAS DATA PLOT FOR GDM		49.0%
9155	347474	BP GDM NA GAS DATA PLOT FOR GDM		49.0%
9289	353872	BP GDM NA GAS DATA PLOT FOR GDM		49.0%
9290		BP GDM NA GAS DATA PLOT FOR GDM		49.0%
9328	359837	BP GDM NA GAS DATA PLOT FOR GDM		49.0%
9365		NON-ELANC BP GDM NA GAS DATA PLOT FOR GDM		49.0%
9604		BP GDM NA GAS DATA PLOT FOR GDM		49.0%
9622		BP GDM NA GAS DATA PLOT FOR GDM		49.0%
9642	EL 374380	BP GDM-NAG GDM GDM GDM GDM GDM GDM		51.5%
9708	EL 375807	BP GDM NAG GDM GDM GDM GDM GDM GDM		57.7%
9709		BP GDM TRINIDAD BHM PROJECT - EXEC		57.7%
9727	EL 375807	BP GDM BHM GLOBAL CONSULTING		57.7%
9757	EL 382102	BP GDM-NAG GAS FENDER UPDATE		57.7%
9824	EL 381703	BP GDM-NAG DM SUPPORT OF RESEARCH		47.0%
9825	EL 383912	BP NA GAS RECALL SWEEP AND DATA I		57.7%



Food is my second highest budget category each month. I don't think the bank will cut my mortgage down to save me a bit each month, so my restaurant spending seems like the next best place to start. Here's how to follow along using your own data:

Here's the Autocorrect box.

We'll be focusing on this section.



Paragraph Styles

Word Options

General
Display
Proofing
Save
Language
Accessibility
Advanced
Customize Ribbon
Quick Access Toolbar
Add-ins

abc Change how Word corrects and formats your text.

AutoCorrect: English (United States)

AutoFormat Math AutoCorrect Actions
AutoCorrect Math AutoCorrect AutoFormat As You Type

- Show AutoCorrect Options buttons
- Correct Two Initial Capitals
- Capitalize first letter of sentences
- Capitalize first letter of table cells
- Capitalize names of days
- Correct accidental usage of cAPS LOCK key

Replace text as you type

Replace: With: Plain text Formatted text

(c)	©
(e)	€
(r)	®
(tm)	™
...	...
:(*

Add Delete

Automatically use suggestions from the spelling checker

Recheck Document

Exceptions for: Document1

OK Cancel

A pair of GOP governors on Friday moved to impose new mitigation measures in their states amid record numbers of new coronavirus infections, with both Texas Gov. Greg Abbott and Florida Gov. Ron

See that enlarged section outlined in red? That's a list of autocorrect words. It's like a dictionary. You can add to it by going

Here.

The screenshot shows the 'Replace Text' dialog box in Microsoft Word. A red box highlights the 'Replace' list, which contains the following entries:

(c)	©
(e)	€
(r)	®
(tm)	™
...	...
:(*

Red arrows point to the following options in the dialog:

- Capitalize names of days
- Correct accidental usage of cAPS LOCK key
- Replace text as you type
- Plain text
- Formatted text
- Automatically use suggestions from the spelling checker

CONTRACTUAL STATUS		ACT FINANCIAL HEALTH	
SPA	POP	Over-run	GM
Contract	Contract	Cost	Profit
6520	BP GDM UPD...	53.9%	
7130	BP GDM WAN...	31.9%	
7526	BP GDM CAL...	51.2%	
77612	BP GDM SDE...	55.2%	
17970	337896_353 BP GDM ARK...	46.2%	
17972	BP GDM LX O...		
18008	BP GDM CAN...		
18171	337884_NAG DATA PH...		
18172	337887_NAG DATA PH...		
18333	319681_GEOGRAPHIC PRODUCTION DATA LOAD	52.9%	
18348	319535_DAT DIRECTORY CLEAN UP AND CONSO	49.0%	
18942	BP GDM_ILX ORACLE SERVER PROJECT	62.4%	
19155	347474_NA GAS DATA PROGRAM DATA ARCHIT	46.4%	
19289	353872_BP GDM_NA GAS ESEARCH MIGRATION E	46.9%	
19290	BP GDM_NA GAS FINDER UPDATE	46.9%	
19328	359837_BP GDM_BHDM EXECUTE PLOT FOR GDM	49.5%	
19365	NON-ELAND BP R5000 SELECTA PROJECT	31.1%	
19604	BP GDM_NA GAS BY ADVISORY BOARD	59.4%	
19622	BP GDM_TRINIDAD BHDM TP CONSULTIN	57.1%	
19642	EL 374380_BP GDM_HSS SEISMIC DATA CLEANUP	51.5%	
19708	EL 375877_BP GDM_NAG O&E ASSIGNMENT PROJEC	57.7%	
19709	BP GDM_TRINIDAD BHDM PROJECT - EXEC	57.4%	
19727	EL 375887_BP GDM_BHDM GLOBAL CONSULTING	52.9%	
19757	EL 382102_BP GDM_NA GAS FINDER UPDATE	47.0%	
19824	EL 381703_BP GDM_NAG DR SUPPORT OF RESEARCH	47.0%	
19825	EL 383912_BP NA GAS RECALL SWEEP AND DATA I	52.1%	

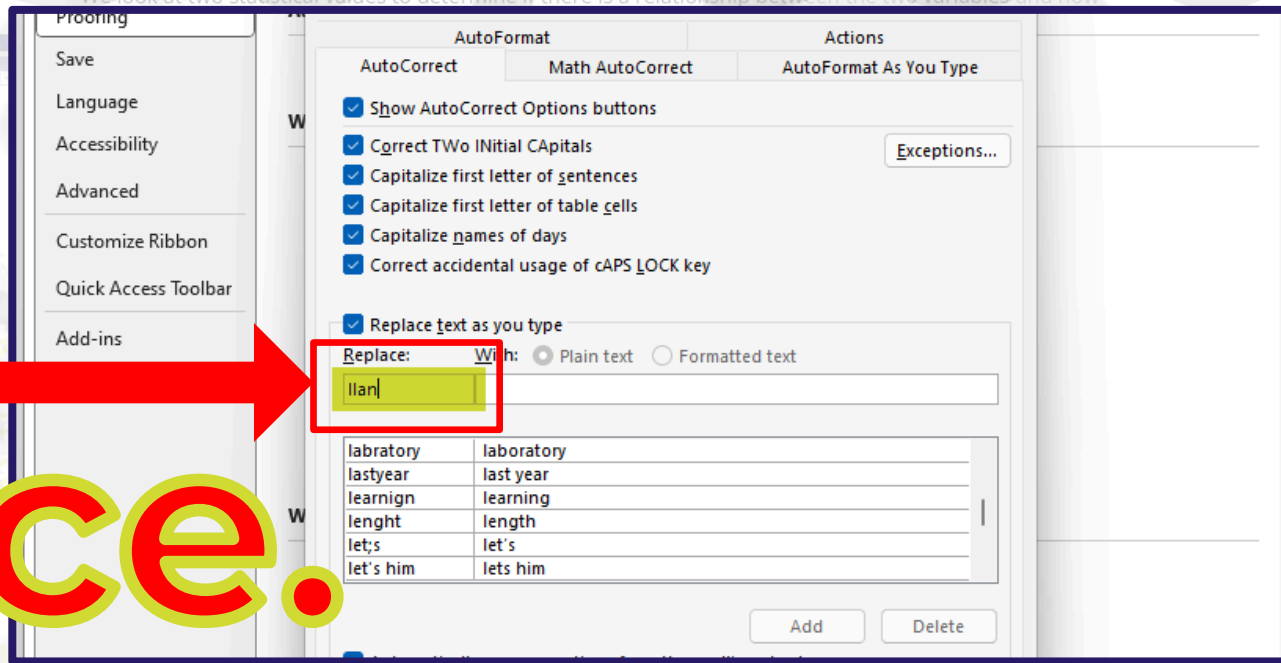
A pair of GOP governors on Friday moved to impose new mitigation measures in their states amid record numbers of new coronavirus infections, with both Texas Gov. Greg Abbott and Florida Gov. Ron

Combining Power BI with statistics yields some very powerful results. In this post we'll show how as it is to do in a regression with the Power BI tool. Linear Regression is a very useful statistical tool that helps us understand the relationship between variables and the effects they have on each other. It can be used across many industries in a variety of ways - from spurring value to gaining customer insight - to benefit businesses. states that have hit The Simple Linear Regression model allows us to summarize and examine relationships between two variables. It uses a single independent variable and a single dependent variable and finds a linear function We look at two statistical values to determine if there is a relationship between the two variables and how

Let's see how that works, using the example of the longest village name:

1. First, dream up of a "code" word. For someone's name, it could be initials. In our example we'll use Ilan as our "code" word in

Replace.



A pair of GOP governors on Friday moved to impose new mitigation measures in their states amid record numbers of new coronavirus infections, with both Texas Gov. Greg Abbott and Florida Gov. Ron

Combining [Power BI](#) with statistics yields some very powerful results. In this post we'll show how easy it is to do Linear Regression with the Power BI tool.

Linear Regression is a very useful statistical tool that helps us understand the relationship between variables and the effects they have on each other. It can be used across many industries in a variety of ways - from spurting value to gaining customer insight - to benefit businesses. The Simple Linear Regression model allows us to summarize and examine relationships between two variables. It uses a single *independent* variable and a single *dependent* variable and finds a linear function that predicts the *dependent* variable values as a function of the *independent* variables.

We look at two statistical values to determine if there is a relationship between the two variables and how

2. Then enter Llanfairpwllgwyngyllgogerychwyrndrobwlllantysilio-gogogoch in

With.

Project	ELIPO	Project Name	WBS ID	Start	End	Cost
16520		BP GDM UPDS VLB COMPLETION AND C...				
17130		BP GDM WAMSWATER DATA QUALITY				
17517		BP TRINIDAD DOCUMENTUM SUPPORT				
17526		BP GDM CALGARY MAD3				
17612		BP GDM SDE 92 DATA SCHEMA				
17970	337896	353 BP GDM ARKOMA BOREHOLE DD ASSUR				
17972		BP GDM LX ORACLE SERVER				
18008		BP GDM CANADA PETROTECHICAL DM				
18171	337884	NAG DATA PROGRAM SEMIC LEAD 200				
18172	337887	NAG DATA PROGRAM LEADS 2005				
18333	319681	GEOGRAPHX PRODUCTION DATA LOAD				
18348	319535	DAT DIRECTORY CLEAN UP AND CONSO				
18942		BP GDM- LX ORACLE SERVER PROJECT				
19155	347474	NA GAS DATA PROGRAM DATA ARCHIT				
19289	353872	BP GDM NA GAS ESEARCH MIGRATION E				
19290		BP GDM NA GAS FINDER UPDATE				
19328	359837	BP GDM BHM EXECUTE PLOT FOR GDM				
19365		NON-ELANC BP R5095 SELECTA OBJECTS				
19604		BP GDM-NA GAS BY ADVISORY BOARD				
19622		BP GDM-TRINIDAD BHM TP CONSULTIN				
19642	EL 374380	BP GDM-SSB SEMIC DATA CLEANUP				
19708	EL 375807	BP GDM NAG GAE ASSIGNMENT PROJEC				
19709		BP GDM TRINIDAD BHM PROJECT - EXEC				
19727	EL 375807	BP GDM BHM GLOBAL CONSULTING				
19757	EL 382102	BP GDM-NA GAS FINDER UPDATE				
19824	EL 381703	BP GDM-NA GDM SUPPORT OF RESEARCH				
19825	EL 383912	BP NA GAS RECALL SWEEP AND DATA I				

Save

Language

Accessibility

Personalization

Custom Ribbon

Quick Access Toolbar

Add-ins

Text Editor

AutoCorrect Math AutoCorrect AutoFormat As You Type

Show AutoCorrect Options buttons

Correct Two Initial Capitals Exceptions...

Capitalize first letter of sentences

Capitalize first letter of table cells

Capitalize games of days

Correct accidental usage of cAPS LOCK key

Replace text as you type

Replace: With: Plain text Formatted text

llan	Llanfairpwllgwyngyllgogerychwyrndrobwlllantysilio-gogogoch
labratory	laboratory
lastyear	last year
learnign	learning
lenght	length
let;s	let's
let's him	lets him

Automatically use suggestions from the spelling checker



to save the a pie each month, so my restaurant spending seems like the next best place to start. here's how to follow along using your own data. first, i built a model since april 27. And hours before he was set to leave for his resort in New Jersey for the weekend, the president abruptly canceled this trip with no explanation.

Then click on the button found at bottom of AutoCorrect box.

Add

CONTRACTUAL STATUS		ACT FINANCIAL HEALTH	
Project	ELIPO	Project Name	Completion %
16520		BP GDM UPDS VLB COMPLETION AND C...	53.9%
17130		BP GDM WAMSWATER DATA QUALITY	31.9%
17517		BP TRINIDAD DOCUMENTUM SUPPORT	49.5%
17526		BP GDM CALGARY INAD3	51.2%
17612		BP GDM SDE 92 DATA SCHEMA	55.2%
17970	337896	353 BP GDM ARKOMA BOREHOLE DD ASSUR	40.5%
17972		BP GDM LX ORACLE SERVER	57.3%
18008		BP GDM CANADA PETROTECHICAL DM	48.6%
18171	337884	NAG DATA PROGRAM SEMIIC LEAD 200	55.4%
18172	337887	NAG DATA PROGRAM LEADS 2005	52.9%
18333	319681	GEOGRAPHIX PRODUCTION DATA LOAD	49.3%
18348	319535	DAT DIRECTORY CLEAN UP AND CONSO	62.1%
18942		BP GDM- LX ORACLE SERVER PROJECT	46.4%
19155	347474	NA GAS DATA PROGRAM DATA ARCHIT	46.9%
19289	353872	BP GDM NA GAS ESEARCH MIGRATION E	46.9%
19290		BP GDM NA GAS FINDER UPDATE	
19328	359837	BP GDM BHM EXECUTE PLOT FOR GDM	49.5%
19365		NON-ELAND BP R5000 SELECTA OBJECTS	31.1%
19604		BP GDM-NA GAS BY ADVISORY BOARD	59.4%
19622		BP GDM-TRINIDAD BHM TP CONSULTIN	44.1%
19642	EL 374380	BP GDM-SSB SEMIIC DATA CLEANUP	51.5%
19708	EL 375817	BP GDM NAG OAE ASSIGNMENT PROJEC	
19709		BP GDM TRINIDAD BHM PROJECT - EXEC	
19727	EL 375807	BP GDM BHM GLOBAL CONSULTING	
19757	EL 382102	BP GDM-NA GAS FINDER UPDATE	
19824	EL 381703	BP GDM-NAG DR SUPPORT OF RESEARCH	47.0%
19825	EL 383912	BP NA GAS RECALL SWEEP AND DATA I	20.1%

Advanced

- Capitalize first letter of sentences
- Capitalize first letter of table cells
- Capitalize names of days
- Correct accidental usage of cAPS LOCK key

Replace text as you type

Replace: With: Plain text Formatted text

labratory	laboratory
lastyear	last year
learnign	learning
lenght	length
let's	let's
let's him	lets him

Automatically use suggestions from the spelling checker



A pair of GOP governors on Friday moved to impose new mitigation measures in their states amid record numbers of new coronavirus infections, with both Texas Gov. Greg Abbott and Florida Gov. Ron

Combining [Power BI](#) with statistics yields some very powerful results. In this post we'll show how easy it is to do Linear Regression with the Power BI tool.

Linear Regression is a very useful statistical tool that helps us understand the relationship between

This is how the Autocorrect box looks once you click

on

Add.

Llan has now been added to the list.



Advanced

Customize Ribbon

Quick Access Toolbar

Add-ins

Trust Center

Capitalize first letter of sentences

Capitalize first letter of table cells

Capitalize names of days

Correct accidental usage of cAPS LOCK key

Replace text as you type

Replace: llan With: Plain text Formatted text

lisense	license
littell	little
litttle	little
liuke	like
livingg	living
Llan	Llanfairpwllgwyngyllgogerychwyrndrobwlllantysiliogogoch

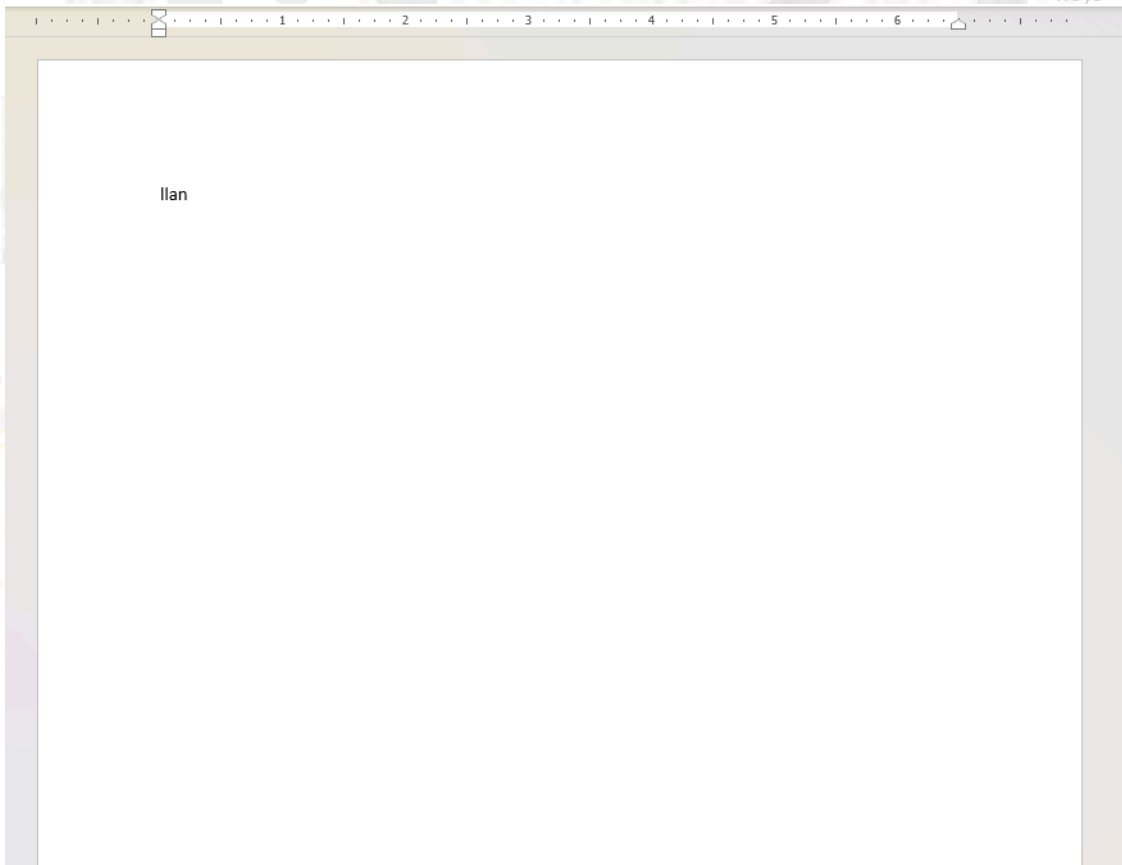
Automatically use suggestions from the spelling checker

each month. This analysis shows the relationship between the number of times I went to restaurants and the money spent in this category of my monthly budget.

Food is my second highest budget category each month. I don't think the bank will cut my mortgage down to save me a bit each month, so my restaurant spending seems like the next best place to start. Here's how to follow along using your own data:

Okay, let's **test** this.

Here's a blank Word document where I have typed in Ilan, but haven't pressed "Enter" yet.



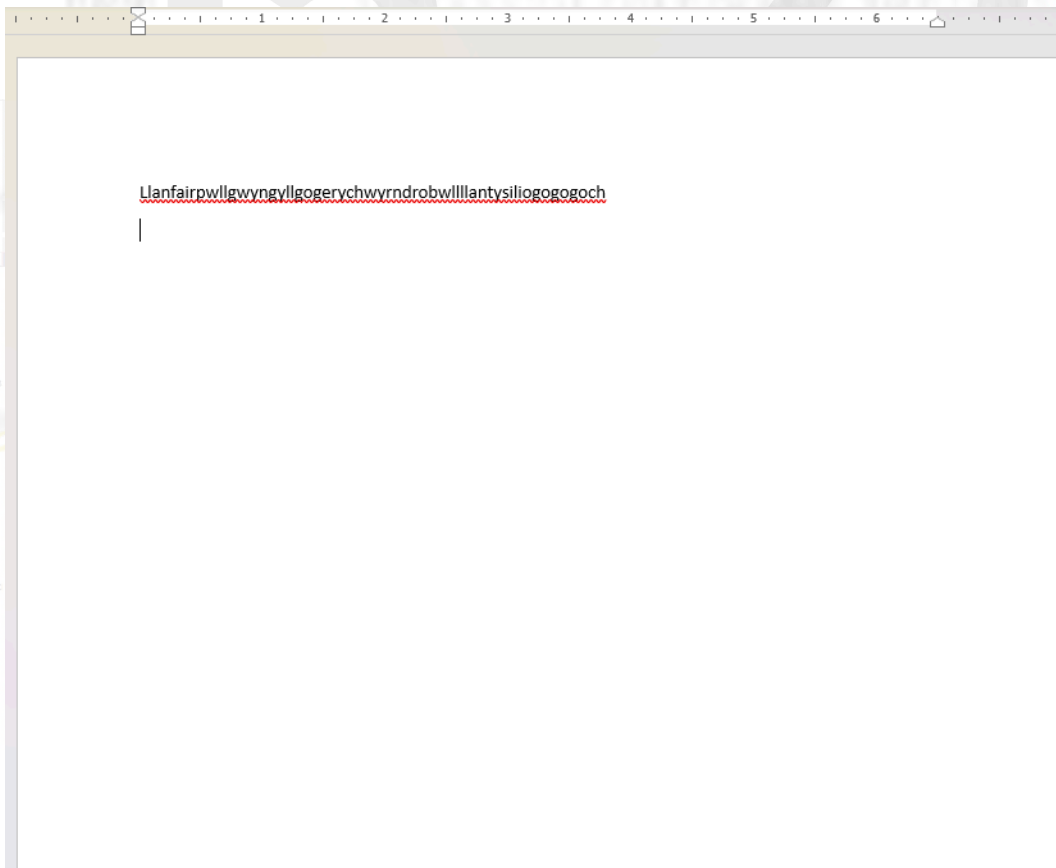
Product	EURO
76520	
77130	
77517	
77526	
77612	
77970	337696.353
77972	
78008	
78171	337694
78172	337687
78333	319601
78348	319535
78942	
79155	347474
79289	353872
79290	
79328	359837
79365	NON-ELANC
79604	
79622	
79542	EL 374385
79708	EL 375877
79709	
79727	EL 375887
79757	EL 382102
79824	EL 381703
79825	EL 383912

Now hit **enter**.

Ta da! Word automatically replaces your “code” with

the real word.

As I said before, you can do this with names. The “code” could be initials and Word will replace with a real name.



This autocorrect is a really nifty
trick for

SPEEDING

up your typing.

I learned this Word trick
from Phillip Konecki
of JFS.

(JFS is short for Jewish Family Services.
But don't worry, he doesn't proselytize.)

If you want emails for
next series of classes,
sign up here: <https://bit.ly/JFSemails>

1 2 3 4 5 6 7 8 9 0

If you want to get in touch with me, you can connect with me on LinkedIn at

<https://www.linkedin.com/in/veroniquefrizzell/>